



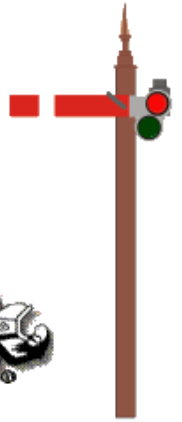
The Semaphore, The Official Publication of Land-O-Sky, Division 15, Southeastern Region, NMRA



The Semaphore

LAND-O-SKY
DIVISION 15, SOUTHEASTERN REGION
NATIONAL MODEL RAILROAD ASSOCIATION
AND
WNC MODEL RAILROADERS, INC.

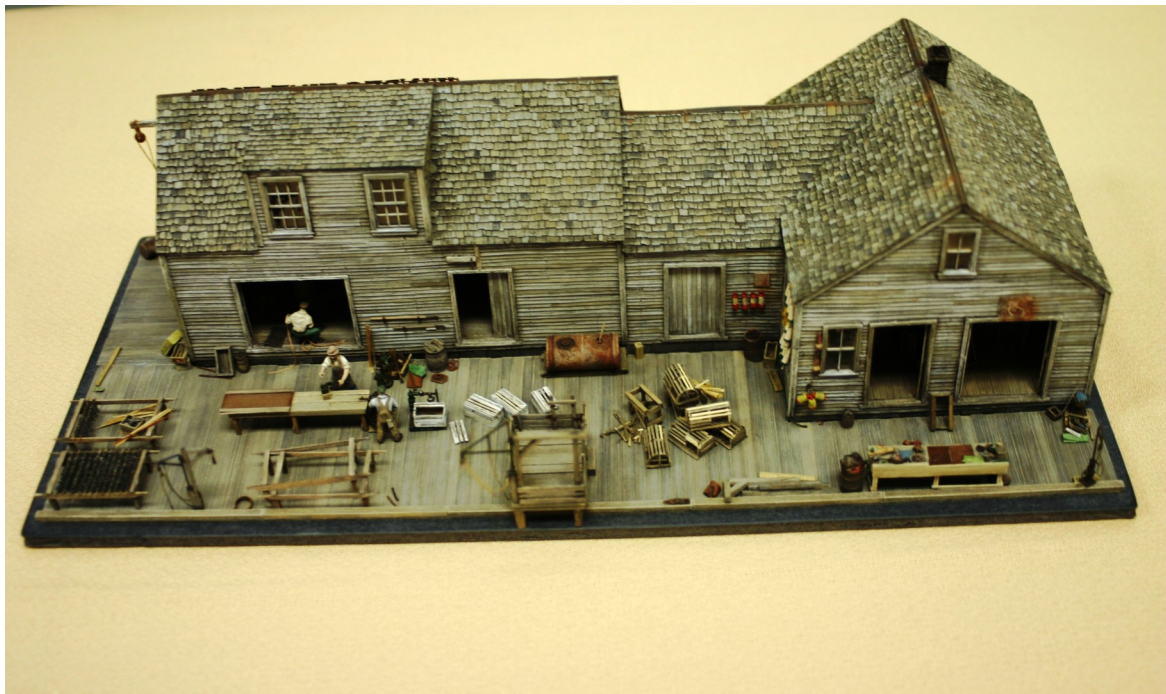
FRED COLEMAN, SUPERINTENDENT
ROBERT BELL, ASST. SUPERINTENDENT
BILL SIBERT, COMPANY CLERK
PENN BULLOCK, BARNMASTER
JIM FIQUA, PAYMASTER
DAVE ANDERSON, WEBMASTER



July 2008

Our next meeting is before the annual picnic on Saturday, July 19, at 10:00 A.M.
Send comments about and contributions to this newsletter to chsmoke@bellsouth.net.
Please keep us informed of changes in your address, phone number or email address.

SAM SWANSON'S SCRATCH-BUILT NEW ENGLAND FISHERY ON DISPLAY AT THE SER CONVENTION.



This is a fine model, easily earning a Merit Award.
Everything is present except the smell



From the Superintendent's Desk

Submitted by Fred Coleman



For the last message that will come from me as superintendent, I would like to say thanks to all of you for your support, help, and trust over the past five years. We have progressed in several different directions over the years to promote model railroading to the public and to create more interest for modelers. Hopefully we will continue in this same positive manner under the direction of our new Superintendent, John Williams, as he will need our support, suggestions and help to implement future projects and programs.

Again, I would like to express my appreciation to all that were involved with the convention, train show and home layout tours for a very successful event, of which we are still receiving calls and e-mails on what a great convention that we put together.

If you are interested in going to the Charlotte show with the modules, please let me know as we will be staying overnight on Friday the 27th to set up for the show on Saturday. We will

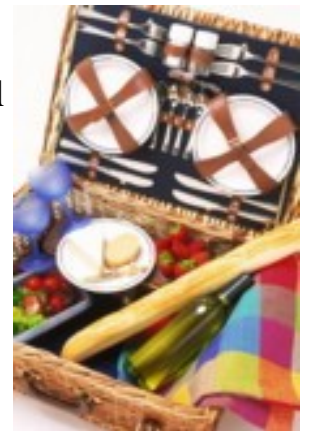
be leaving the barn on Friday the 27th and returning after the show that ends at 4:00 PM on Saturday. Even if you can't stay over night, we welcome folks who can help us during one day to set up or run trains, or help with the take-down on Saturday.

Our July meeting will be our annual picnic to be held on Saturday the 19th of July at our regular meeting place at 10:00 with some activities in the barn, prior to eating around noon. Please let me know if you will be attending in order to have enough food, also if anyone would like to help with the food, there again let me know. The program will include the annual presentation the Superintendent's Award along with several other awards and certificates.

So here is to another great year in model railroading.

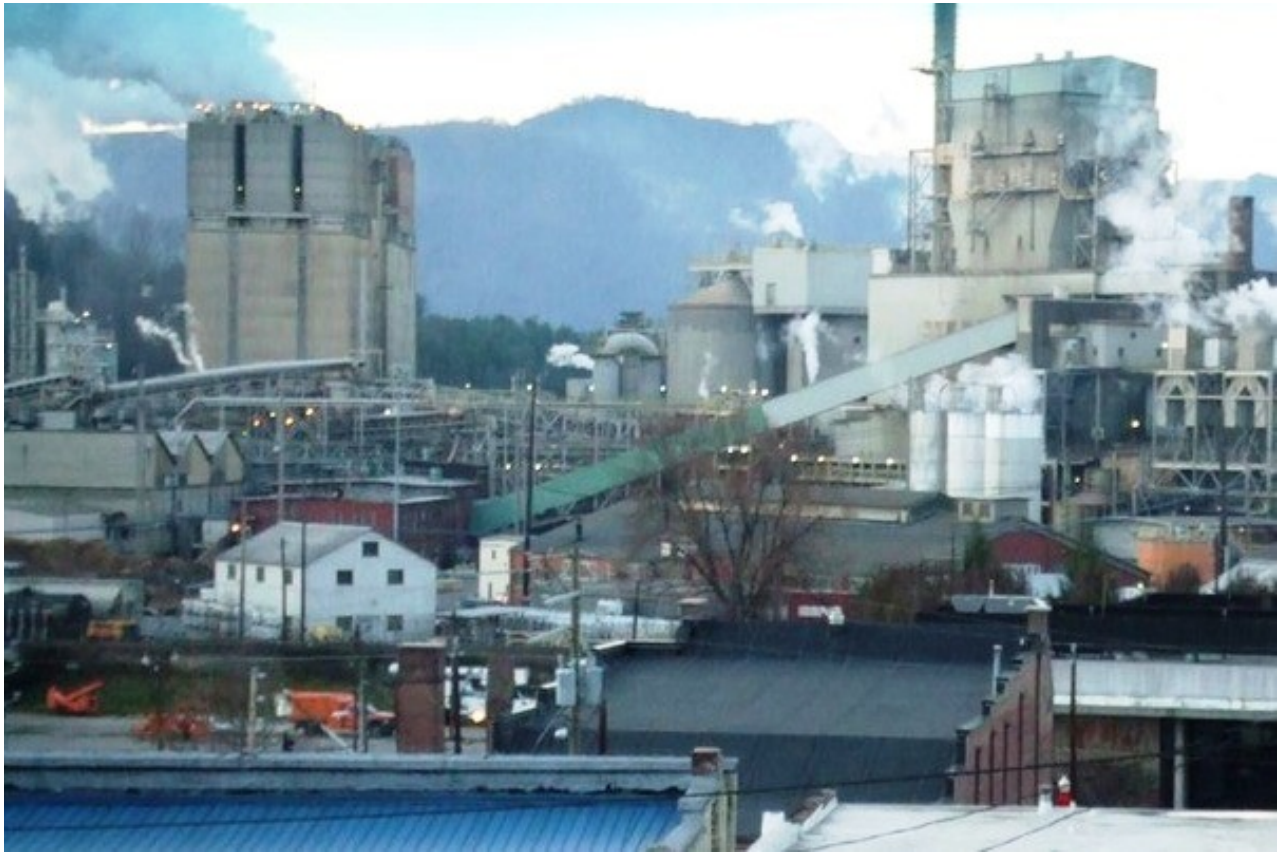
Keep on track

Fred



Operating Session

The LOST railroad will have an operating session on Saturday July 12th at 9am and Sunday July 27th at 6:30 pm.



Blue Ridge Paper

By Clinton Smoke

During our recent conference, we visited Blue Ridge Paper. Blue Ridge Paper is one of America's largest producers of gable-top juice and milk cartons in addition to a variety of papers for other uses. The North Carolina manufacturer operates a pulp and paper mill, a plastic-coating extrusion facility, and four packaging plants employing more than 2000 workers. From its corporate headquarters and original manufacturing base in the Canton, North Carolina, Blue Ridge Paper makes a wide range of paper, board, and packaging products. Its paper products include envelope, covering kraft, forms, offset, and specialty papers. The company's paperboard includes polycoated and uncoated versions used primarily for food service packaging applications. Its DairyPak unit makes gable top cartons for liquid and dry goods. Sales exceeded \$500 million in 2007.

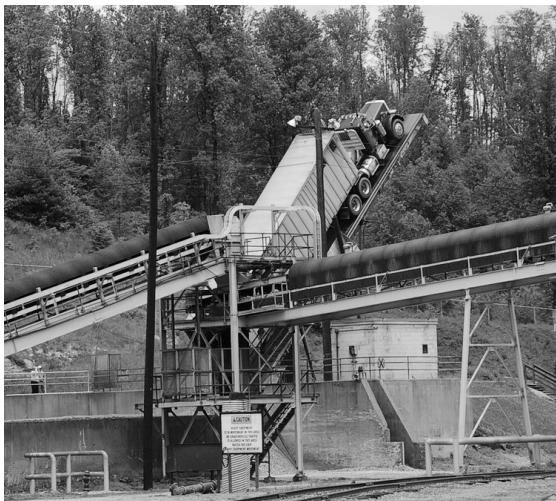
Canton is located on the Murphy Branch of the old Southern Railway. At one time, Blue Ridge Paper, formerly known as Champion Paper, was one of the Southern's largest customers. They are still a significant railroad customer, now of Norfolk Southern. Consider the following statistics: Outbound, approximately 100 box cars of product per month. Much of their product is shipped by truck and that may change as fuel prices rise. Inbound shipments include approximately 1100 wood-chip cars, 350 coal cars, 60 chemical tank cars, and 35 resin cars a month. Two trains from Asheville serve Canton daily where up to 250 cars can be stored. The paper mill has two diesel switchers, one out of service and one rail RailKing switcher. During our visit, I saw several NS locomotives switching inside the facility.



Scenes from our tour of the Blue Ridge Paper in Canton, NC



Though idle during our visit, Blue Ridge Paper unloads 35 to 40 wood chip cars a day with this rotary dumper.



Ridge uses nearly 6000 tons of chips a day, 40 percent of which is transported by truck.



In addition to the diesel switchers mentioned in the text, Blue Ridge uses this Rail King switcher.

PHOTO CREDITS: ALL THREE PHOTOGRAPHS ON THIS PAGE PROVIDED COURTESY OF BETH BARTLETT.



NEWS FOR OUR MEMBERS

Election results

At our June meeting, a slate of new officers was offered and, since there were no nominations from the floor, the slate was accepted by acclamation. The new officers are:

Superintendent: John Williams

Assistant superintendent: Robert Bell

Company Clerk: Ken Granzin

Paymaster: Jim Fuqua

Your help is really needed!

Here is a real opportunity for you to help your club, your hobby, and see a great train show. This week end, June 27 and 28, we are taking the modules to Charlotte for a train show. We need your help in loading, unloading, setting up, running trains, being nice to interested people, and taking it all apart again.

Actually, if you could do just one of those tasks, it would make life a lot easier on the few who always seem to do this for us. Contact Fred Coleman if you have questions or if you want to offer to help. His number is 699-0983. If he doesn't answer, leave a message. Or try Fred at fredcoleman@bellsouth.net.

Its party time

Members are reminded that our next meeting is on Saturday, July 19. This is our annual picnic. Bring your significant other, and enjoy fellowship and a meal together. Please contact Fred to let him know how that you are planning to attend (so he can feed you). Better yet, offer to bring a covered dish of your favorite food for others to enjoy. (That would let Fred enjoy the day too.) His phone Number is 699-0983. If he doesn't answer, leave a message. You can also contact him at fredcoleman@bellsouth.net.

WE WILL LEAVE YOU WITH THIS PARTING SHOT



What are these people doing? Where are they?
We will tell you next month. See you then.